

**Local Cost-share Program offers assistance to farmers in the Elkhart River Watershed**

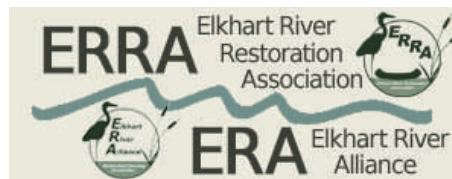
A new cost-share program is now available for farmers in the Elkhart River Watershed, which includes parts of Elkhart, Kosciusko, LaGrange, and Noble counties. The program will provide financial assistance to farmers who are interested in installing conservation practices on their land. Eligible practices include manure management plans, exclusion fencing, rotational grazing, and many more. Applicants can receive up to 75 percent cost-share on approved practices.



No-till soy beans. Conservation tillage reduces soil erosion and can help decrease fuel input due to fewer passes in the field. *Photo courtesy of USDA NRCS.*

An Urban Cost-share Program is also available for anyone interested in installing stormwater management practices in one of the ten urban critical areas. Contact the Elkhart County SWCD or visit [www.elkhartriver.org](http://www.elkhartriver.org) for an application.

This project has been funded wholly or in part by the United States Environmental Protection Agency under assistance agreement C9975482-06 to the Indiana Department of Environmental Management. The contents of this document do not necessarily reflect the views and policies of the Environmental Protection Agency, nor does mention of trade names or commercial products constitute endorsement or recommendation for use.



For more information contact the Elkhart County Soil and Water Conservation District  
17746-B County Road 34  
Goshen, IN 46528  
Phone: 574-533-3630 ext. 3  
Fax: 574-533-4620  
Website: [www.elkcoswcd.org](http://www.elkcoswcd.org)  
[www.elkhartriver.org](http://www.elkhartriver.org)



*Elkhart River Alliance*

**Agriculture Cost-Share Program**



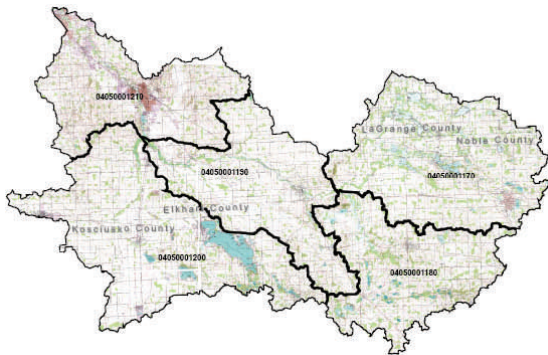
*Photo courtesy of USDA Natural Resources Conservation Services*

Looking for a way to increase the efficiency of your farm, stay ahead of regulations, and preserve your farm for future generations? This program could help.

## Critical Areas Eligible for Assistance

\*Maps are available from the Elkhart County SWCD or the Elkhart River Alliance.

- Turkey Creek (Elkhart Co.)
- Upper Yellow Creek (Elkhart Co.)
- Lower Yellow Creek (Elkhart Co.)
- Upper Rock Run Creek (Elkhart Co.)
- Horn Ditch (Elkhart Co.)
- Papakeeche Subwatershed (Kosciusko, Noble Co.)
- Knapp Lake Chain (Kosciusko, Noble Co.)
- Stony Creek (Elkhart, LaGrange, Noble Co.)
- Jones Lake (Noble Co.)
- Elkhart River South Branch-Upper Reaches (York Township, Noble Co.)
- Upper Solomon Creek (Elkhart, Kosciusko, Noble Co.)
- Lower Solomon Creek (Elkhart, Noble Co.)
- LaGrange County Lakes (South Central LaGrange, Noble Co.)
- Wawasee Area (Kosciusko, Noble Co.)



Elkhart River Watershed. Map courtesy of V3.

## How The Program Works

The cost-share program will pay up to 75 percent of the following practices used to improve conservation on agricultural lands.

- Exclusion Fencing/Stream Crossing
- Rotational Grazing
- Nutrient Management Plan
- Manure Management Plan
- Alternative Watering System
- No-till/Reduced Till (Conservation Tillage)
- Grassed Waterways



Alternative watering systems prevent livestock from accessing waterways. Tanks are one option. Photo courtesy of USDA NRCS.



- Buffers/Filter Strips
- Grade-Stabilization Structures
- Cover Crop
- Wetland Restoration
- Water and Sediment Control Basin (WASCOB)

Buffers slow down runoff and trap sediment, helping to sustain the life of streams. Photo courtesy of USDA NRCS.

Cost-share participants must have a conservation plan for their operation. AFOs and CFOs must have a Comprehensive Nutrient Management Plan (CNMP). Up to 90% of the development of a CNMP will be cost-shared. CAFOs are not eligible for this program.

Technical assistance for design and installation of practices will be offered by the Elkhart River Watershed Regional Technician, Soil and Water Conservation Districts, and District Conservationists.

## How To Apply

**Eligibility:** Anyone who farms (crops or livestock) in the fourteen critical areas in the Elkhart River Watershed and is interested in incorporating conservation practices into his or her operation.

**Application:** All interested parties must submit an application to the Elkhart County Soil and Water Conservation District. Applications are available in the SWCD office, at [www.elkcoswcd.org](http://www.elkcoswcd.org), and [www.elkhartriveralliance.org](http://www.elkhartriveralliance.org).

**Deadline:** The grant term ends in February 21, 2010. All practices must be installed and invoices received by that time.

**Qualifying:** All applications will be ranked based on proximity to a waterbody and potential for reducing sediment, *E. coli*, and nutrient pollution.

For more information contact the Elkhart County Soil and Water Conservation District  
17746-B County Road 34  
Goshen, IN 46528

Phone: 574-533-3630 ext. 3

Fax: 574-533-4620

Website: [www.elkcoswcd.org](http://www.elkcoswcd.org)

[www.elkhartriveralliance.org](http://www.elkhartriveralliance.org)

Learn more about the Elkhart River Watershed: check out the Elkhart River Watershed Management Plan.